

Spring Grove Village

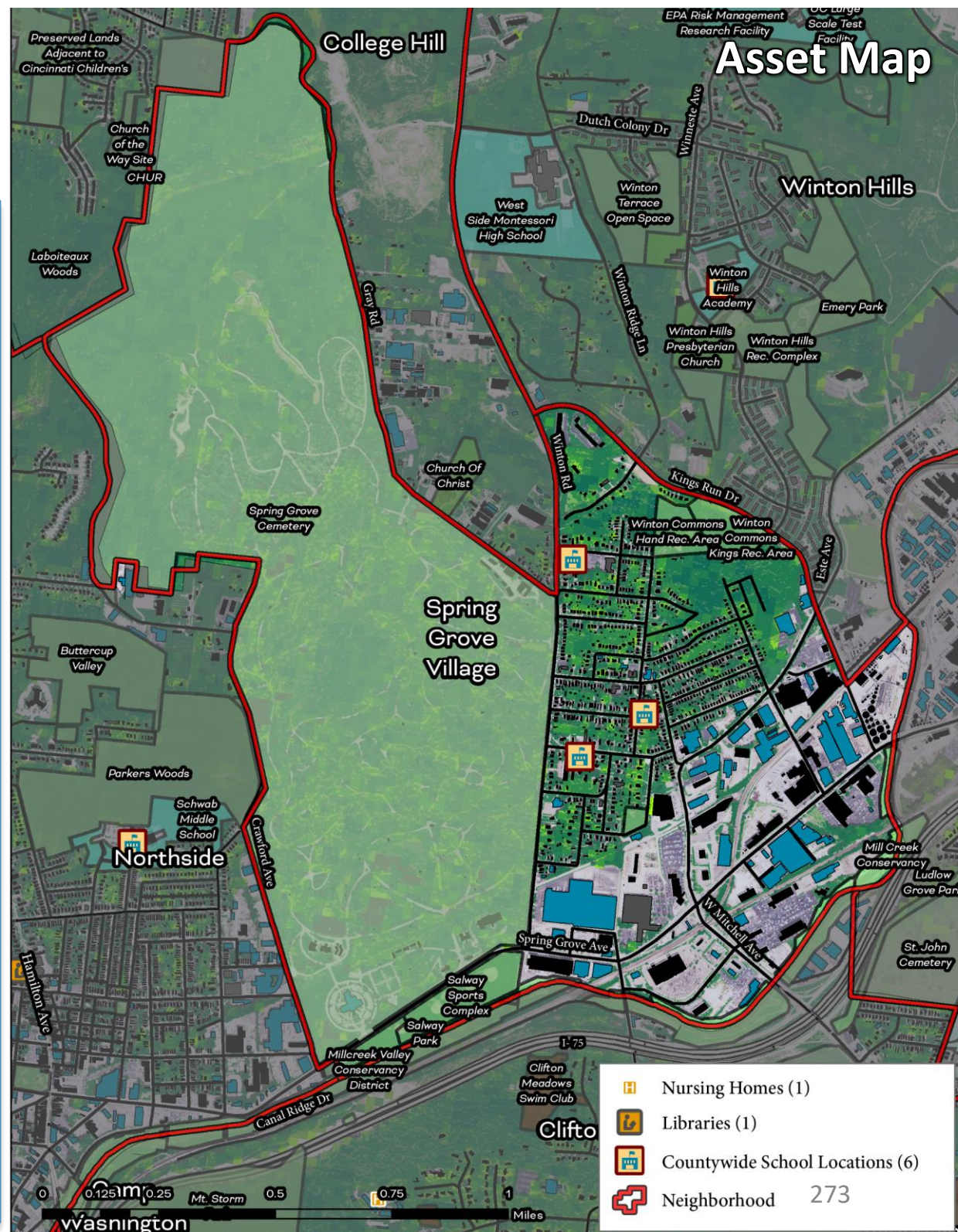
Cincinnati Neighborhood Profile

Spring Grove Village is a mixed-race neighborhood (53.8% Black, 41.8% White) with a population of 1,992 residents. The neighborhood has a community council (Spring Grove Village Community Council) and is a part of the Village Development Corporation. Spring Grove Village's most recent community plan is the SGV 2.0 Spring Grove Village Neighborhood Plan (ongoing).

Life expectancy in Spring Grove Village is 75.7 years (ranked 16th out of neighborhoods assessed). There is low to moderate disease prevalence. Spring Grove Village ranks 24th in diabetes and obesity (14.2% and 38.9% of residents, respectively). Of Spring Grove Village residents, 12.1% lack health insurance (ranked 23rd), 2.7% have independent living difficulties (ranked 21st), and 14.1% of residents live with a disability (ranked 26th).

Spring Grove Village ranks 14th in tree canopy coverage (32.5%), 10th in greenness of land surface (66.9%), and 3rd in percent land in parks and greenspaces (71.3%). Spring Grove Village ranks 31st in heat island exposure, with a heat index of 0.69. Residents face mostly moderate to extreme exposure to built environmental hazards relative to the other neighborhoods, including extreme potential lead paint exposure, PM2.5 Levels in Air, proximity to potentially toxic industrial sites, and proximity to hazardous waste treatment and disposal facilities. Spring Grove Village also has very high exposure to water pollution sources and superfund sites.

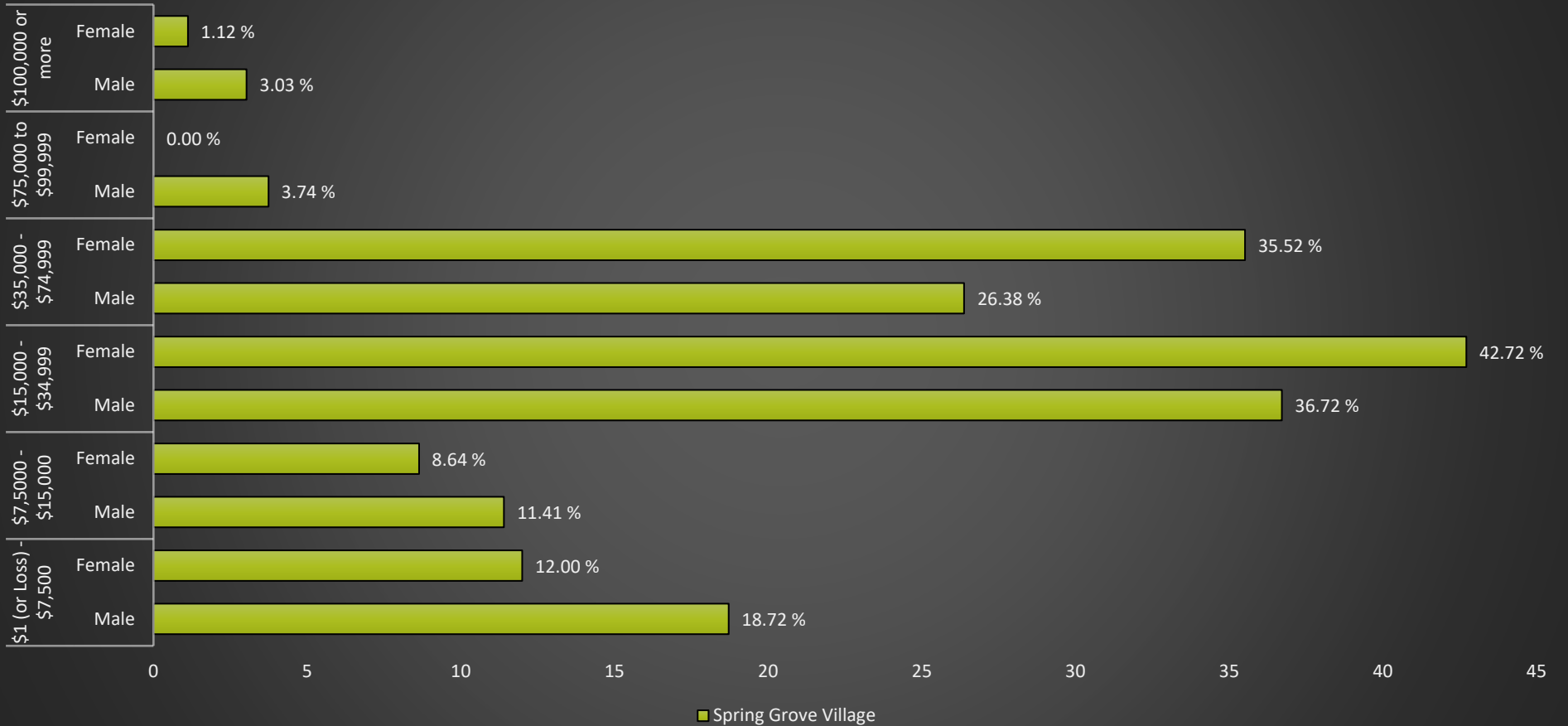
Spring Grove Village has an educational attainment of 26. Of Spring Grove Village Residents, 16.7% live in poverty (ranked 13th) and 18% of households receive SNAP benefits (ranked 22nd). Over half of housing units are renter-occupied (54.4%). Spring Grove Village is 17th in vehicle access and 6.7% of residents lack a vehicle.



Spring Grove Village

Cincinnati Neighborhood Profile

Spring Grove Village: Annual Income by Gender



Spring Grove Village Notable Indicators

Percent Land in Parks and Greenspaces	Proximity to Potentially Toxic Industrial Activity and Hazardous Waste Treatment and Disposal Facilities	Proximity to Water Pollution Sources and Superfund Sites
71.3% (Ranked 3rd highest)	Extreme	Very High

Spring Grove Village

Cincinnati Neighborhood Profile

People			
Indicator	Rank	%	# of Persons
Population	-	-	1,992
Persons over 65	23	12.0%	239
Persons 17 and Under	30	24.1%	481
Children Living w/ Grandparents	45	4.0%	80
Race/Ethnicity:			
Black	-	53.8%	1,071
white	-	41.8%	832
Asian	-	0.0%	-
Other	-	4.5%	89
Latinx	-	6.6%	131
Persons 5 and Older in Households w/ Limited English Ability	39	1.8%	36

Health			
Indicator	Rank	Value	
Life Expectancy	16	75.7 years	-
Disease Prevalence Estimates:			
	Rank of % w/Condition	% with Condition	Persons with Condition
Asthma	22	11.1%	222
Cancer	22	5.5%	110
Diabetes	24	14.2%	283
High Blood Pressure	23	36.0%	717
Heart Disease	22	7.0%	140
Kidney Disease	21	3.2%	63
Obesity	24	38.9%	774
Lack of Health Insurance	23	12.1%	242
Persons w/ Independent Living Difficulty	21	2.7%	53
Persons Living w/ Disability	26	14.1%	281

Ecosystems and Infrastructure		
Indicator	Rank	Value
Tree Canopy Coverage	14	32.5%
Greenness of Land Surface	10	66.9%
Percent Land in Parks and Greenspaces	3	71.3%
Impervious Surface	19	29%
Heat Island Exposure	31	0.69
Walkability	-	Above Average
Persons w/ Low-Income and Low Food Access	1	0.0%
Transit Accessibility	-	Excellent
Daytime Population vs. Resident Population	42	268.0%
Commuters Leaving Each Day	-	971
Commuters Using Public Transit	13	4.4%

Spring Grove Village

Cincinnati Neighborhood Profile

Socio-Economic Indicators			
Indicator	Rank	%	#
Persons Living in Poverty	13	16.7%	333
SNAP Recipient Households	22	18.0%	155
Educational Attainment:			
Less than High School	-	10.2%	-
HS or Equivalent	-	21.6%	-
Some College	-	16.9%	-
Associate's Degree	-	4.5%	-
Bachelor's Degree or Higher	-	15.6%	-
Educational Attainment Index	26	0.40	-
Extreme Housing Burdens:			
Renter-Occupied Housing (as % of All Housing Units)	16	54.4%	469
Renters Spending 30% of Income or More on Rent + Utilities	25	27.8%	240
Renters Spending 50% of Income or More on Rent + Utilities	12	9.4%	81
Homeowners Spending 30% of Income or More on Mortgage + Utilities	25	18.3%	72
Average Energy Costs (as % of Income)	24	4.1%	-
Persons without Vehicle Access	17	6.7%	133

Built Environmental Hazards		
Indicator	Relative Exposure Level	Value
Traffic Exposure	Low	-
Potential Lead Paint Exposure (Houses Built pre-1960)	Extreme	83.69%
Cancer Risk from Air Pollution	Moderate	-
Respiratory Disease Risk from Air Pollution	Moderate	-
Proximity to Water Pollution Sources	Very High	-
PM2.5 Levels in Air, µg/m3	Extreme	9.84
Ozone Concentration, ppb	Very High	46.77
Diesel Particulate in Air, µg/m3	Moderate	0.80
Proximity to Superfund Sites	Very High	-
Proximity to Potentially Toxic Industrial Activity	Extreme	-
Proximity to Hazardous Waste Treatment and Disposal Facilities	Extreme	-

Neighborhood Planning	
Indicator	Description
Community Councils	Spring Grove Village Community Council
Community Development Corporations	Village Development Corporation
Community Plans	SGV 2.0 Spring Grove Village Neighborhood Plan (Ongoing)